

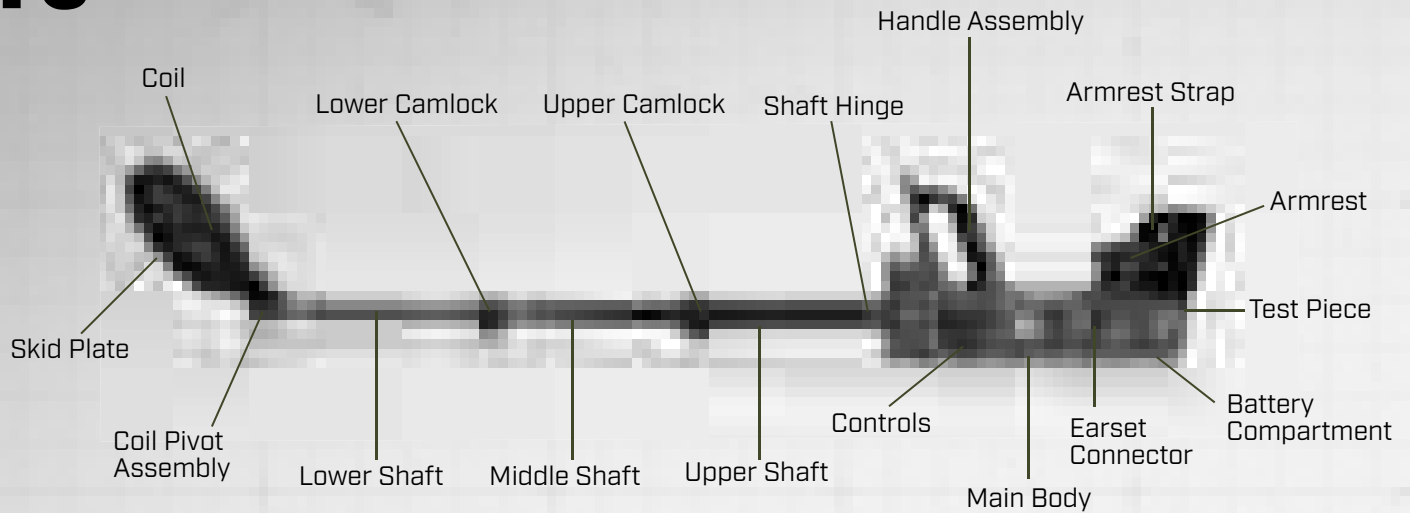
F3Ci Enhanced Metal Detector

The F3Ci is a lightweight, compact detector that includes a uniquely designed mechanical platform which provides superior ergonomics. It is a robust detector that is extremely simple to operate.

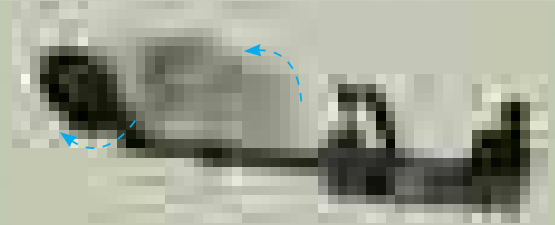
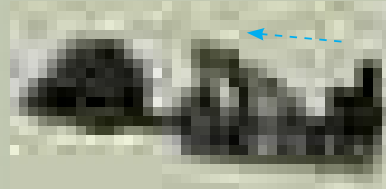
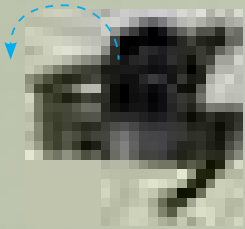


HELPING TO DEFEAT "IMPROVISED" THREATS.

F3Ci Product Features



COMPACT / QUICK TO DEPLOY



F3Ci Key Features

- Variable sensitivity through the selection of seven uniquely combined audio and sensitivity configurations
- Detection, interrogation and pinpointing operating modes
- Able to detect ferrous and non-ferrous targets
- Fully enclosed and protected cables
- Audio, visual and vibration alert cues
- Capable of detecting wires and other conductive components used in the construction of IED
- Simple to operate
- Waterproof (IP68)
- Long-lasting battery life
- Fully adjustable for operator comfort
- Optional hard case also available

F3Ci Specifications

Operating Length	1490 mm / 59 in – 750 mm / 30 in
Packed Length	410 mm / 16 in
Operating Weight	2.7 kg / 6 lbs
Transmission	V-FLEX
Audio Output	Internal Speaker Earset (Options: 1. Speaker ON / 2. Speaker OFF)
Water Resistant	IP68 (Waterproof to 3 m)
Batteries	4 x C-Cell (Alkaline or Rechargeable)
Visual Display	Nine LED
Low Battery Alarm	Visual and Audio
Operating Temperature	-30°C to 60°C / -22°F to 140°F
Design Standard	MIL-STD-810G

4907-0865-4 Brochure CM 2P A4 F3Ci EN

COUNTERMINE

+61 8238 0888
 countermine@minelab.com.au

minelab.com/countermine

